



ORCHARD GARDEN TERRACE

FLOOR PLANS

ELEPHANT PARK

ORCHARD GARDENS TERRACE

The sophisticated façade of Orchard Gardens Terrace recalls the grandeur of Georgian architecture, giving the feeling of being in an historic London square. The terrace building comprises a cluster of ground-floor shops, topped with six floors of one, two and three-bedroom homes, including five duplexes, each with south-facing roof terraces.



HIGHWOOD GARDENS



BUILDINGS

- H02C** - The Highwood
- H02D** - Highwood Garden Terrace (North)
- H02B** - Highwood Court
- H02A** - Highwood Garden Terrace (South)
- H03C** - Orchard Point
- H03D** - Orchard Place
- H03B** - Orchard View
- H03A** - Orchard Gardens Terrace

KEY

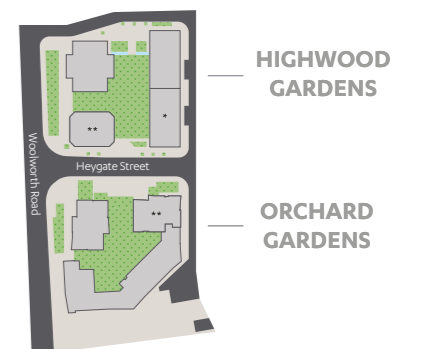
- | | |
|---------------------------|---------------------------|
| 1 Play Area | 7 Car Club Space |
| 2 Residents' Grow Garden | 8 Cycle Store Entrance |
| 3 Residents' Room | 9 Residents' Gym |
| 4 Residents' Room Terrace | 10 Residents' Gym Terrace |
| 5 Residents' Courtyard | 11 West Grove Club |
| 6 Concierge | |

ORCHARD GARDENS



COLOUR KEY

- | | | |
|------------------------------------|--------------------------|---------------------|
| Courtyard Hard Surfaces and Paving | Green Roof | Residents' Entrance |
| Public Realm Paving | Grow Gardens | Part Affordable |
| Road | Grass / Soft Landscaping | Affordable |
| Roof | Car Park Entrance | |
| Roof with photovoltaic panels | | |



HIGHWOOD GARDENS - GROUND FLOOR



KEY

- 1 Walworth Road Retail
- 2 The Highwood and Highwood Garden Terrace North Cycle Storage Entry
- 3 The Highwood Lift lobby
- 4 The Highwood and Highwood Garden Terrace North Post Room
- 5 The Highwood Refuse & Recycling Area
- 6 West Grove Club Lobby
- 7 Entrance to The Highwood and Highwood Garden Terrace North
- 8 Concierge
- 9 Highwood Garden Terrace North Lift Lobby
- 10 Highwood Garden Terrace North Refuse & Recycling Area
- 11 Residential Basement Car Park Ramp
- 12 Highwood Court Entrance, Cycles and Lift
- 13 Car Park and Service Entry
- 14 Vehicle Service Area
- 15 Highwood Garden Terrace South Refuse & Recycling Area
- 16 Highwood Garden Terrace South Cycle Storage
- 17 Highwood Garden Terrace South Entrance Lift Lobby and Post Room
- 18 Highwood Garden Terrace South Entrance
- 19 Central Shopping Street Retail

ORCHARD GARDENS - GROUND FLOOR



KEY

- 1 Orchard Point Entrance Lobby
- 2 Orchard Gardens Cycle Storage
- 3 Orchard Point Refuse & Recycling Area
- 4 Service area
- 5 Orchard Place Lobby Entrance, Refuse & Recycling Area and Cycles
- 6 Walworth Road Retail
- 7 Central Shopping Street Retail (including foodstore)
- 8 Orchard Point Refuse & Recycling Area
- 9 Orchard View Refuse & Recycling Area
- 10 Orchard Gardens Terrace Refuse & Recycling Area
- 11 Orchard Gardens Terrace Entrance Lobby
- 12 Service area

COLOUR KEY

- Retail and Service Bay
- Residential Functions

RESIDENTS' ROOM

Located on the first floor of Orchard Point



- KEY**
- Orchard Point
 - Suite
 - One Bedroom
 - Two Bedroom
 - Three Bedroom
 - Residents' Room
 - Wheelchair Accessible Homes
 - Coming Soon
 - ▲ Dimension Indicator
 - W Fitted Wardrobe
 - W/D Washer Dryer
 - HEC Heating & Electrical Controls
 - C Coat Cupboard
 - * Part-Affordable Housing
 - ** Affordable Housing

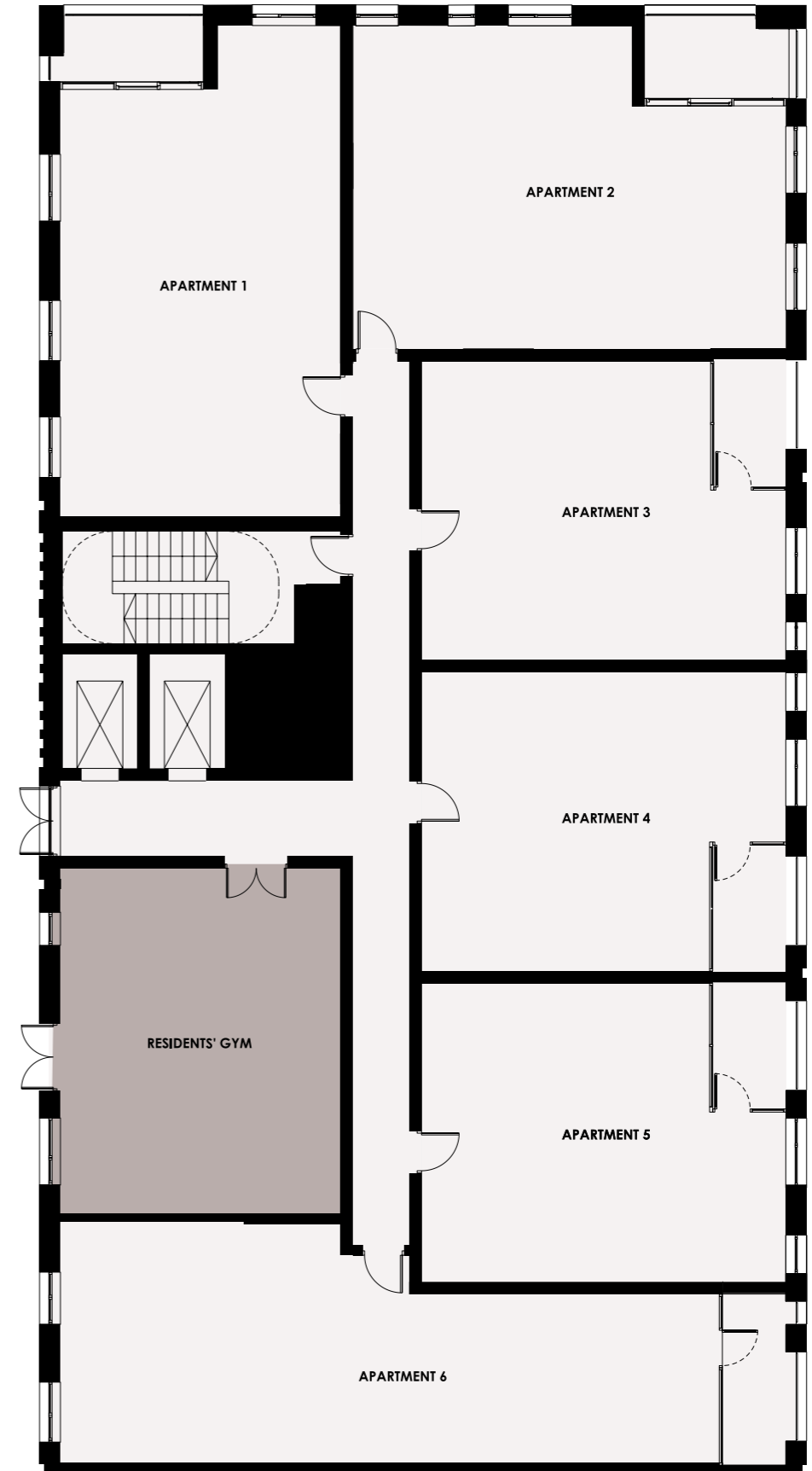


RESIDENTS' GYM

Located on the first floor of Highwood Garden Terrace



- KEY**
- Highwood Garden Terrace (North)
 - Suite
 - One Bedroom
 - Two Bedroom
 - Three Bedroom
 - Resident's Gym
 - Wheelchair Accessible Homes
 - ▲ Dimension Indicator
 - W Fitted Wardrobe
 - W/D Washer Dryer
 - HEC Heating & Electrical Controls
 - C Coat Cupboard
 - * Part-Affordable Housing
 - ** Affordable Housing



ORCHARD GARDENS TERRACE

H03A | Floor 01



- KEY**
- Orchard Gardens Terrace
 - Suite
 - One Bedroom
 - Two Bedroom
 - Three Bedroom
 - Residents' Room
 - Wheelchair Accessible Homes
 - ▲ Dimension Indicator
 - W Fitted Wardrobe
 - W/D Washer Dryer
 - HEC Heating & Electrical Controls
 - C Coat Cupboard
 - * Part-Affordable Housing
 - ** Affordable Housing

APARTMENT 1

INTERNAL AREA	53.1m ²	571.9ft ²
EXTERNAL AREA	11.5m ²	124.2ft ²
Living / Kitchen / Dining	5.7m x 4.5m	18.6' x 14.7'
Bedroom	2.7m x 4.5m	8.9' x 14.8'
Terrace	2.7m x 4.3m	8.8' x 14.1'

APARTMENT 2

INTERNAL AREA	53.2m ²	573.1ft ²
EXTERNAL AREA	11.3m ²	122.1ft ²
Living / Kitchen / Dining	5.7m x 4.5m	18.6' x 14.7'
Bedroom	2.7m x 4.5m	8.9' x 14.8'
Terrace	2.9m x 4.2m	9.4' x 13.8'

APARTMENT 3

INTERNAL AREA	69.1m ²	744.2ft ²
EXTERNAL AREA	21.4m ²	230.6ft ²
Living / Kitchen / Dining	5.7m x 4.0m	18.8' x 13.0'
Master Bedroom	2.7m x 5.2m	8.9' x 17.2'
Bedroom 2	2.8m x 3.5m	9.1' x 11.5'
Terrace	5.5m x 3.8m	18.2' x 12.6'

APARTMENT 4

INTERNAL AREA	67.2m ²	723.1ft ²
EXTERNAL AREA	7.8m ²	83.6ft ²
Living / Kitchen / Dining	5.6m x 6.9m	18.5' x 22.7'
Bedroom	3.3m x 3.9m	10.7' x 12.7'
Balcony	2.1m x 3.4m	6.9' x 11.3'

APARTMENT 5

INTERNAL AREA	53.4m ²	574.6ft ²
EXTERNAL AREA	5.0m ²	53.9ft ²
Living / Kitchen / Dining	5.7m x 4.5m	18.8' x 14.7'
Bedroom	2.7m x 4.6m	8.9' x 15.0'
Balcony	2.4m x 2.0m	8.0' x 6.5'

APARTMENT 6

INTERNAL AREA	53.3m ²	573.6ft ²
EXTERNAL AREA	5.4m ²	58.4ft ²
Living / Kitchen / Dining	5.7m x 4.5m	18.6' x 14.7'
Bedroom	2.7m x 4.6m	8.9' x 15.0'
Balcony	2.6m x 2.0m	8.4' x 6.5'

APARTMENT 7

INTERNAL AREA	70.1m ²	754.0ft ²
EXTERNAL AREA	8.6m ²	92.9ft ²
Living / Kitchen / Dining	6.6m x 3.9m	21.7' x 13.0'
Master Bedroom	2.8m x 5.2m	9.1' x 17.2'
Bedroom 2	3.3m x 3.5m	10.9' x 11.6'
Balcony	4.7m x 1.8m	15.4' x 5.8'

APARTMENT 8

INTERNAL AREA	73.1m ²	787.3ft ²
EXTERNAL AREA	6.0m ²	64.6ft ²
Living / Kitchen / Dining	6.5m x 6.2m	21.3' x 20.4'
Master Bedroom	3.6m x 3.4m	11.6' x 11.1'
Bedroom 2	3.3m x 4.1m	10.7' x 13.4'
Balcony	1.5m x 3.8m	5.0' x 12.5'



ORCHARD GARDENS TERRACE

H03A | Floor 02



- KEY**
- Orchard Gardens Terrace
 - Suite
 - One Bedroom
 - Two Bedroom
 - Three Bedroom
 - Residents' Room
 - Wheelchair Accessible Homes
 - ▲ Dimension Indicator
 - W Fitted Wardrobe
 - W/D Washer Dryer
 - HEC Heating & Electrical Controls
 - C Coat Cupboard
 - * Part-Affordable Housing
 - ** Affordable Housing

APARTMENT 1

INTERNAL AREA	53.2m ²	572.2ft ²
EXTERNAL AREA	5.6m ²	59.8ft ²
Living / Kitchen / Dining	5.7m x 4.5m	18.6' x 14.7'
Bedroom	2.7m x 4.5m	8.9' x 14.8'
Balcony	2.6m x 2.1m	8.4' x 6.9'

APARTMENT 2

INTERNAL AREA	53.2m ²	573.1ft ²
EXTERNAL AREA	5.1m ²	54.4ft ²
Living / Kitchen / Dining	5.7m x 4.5m	18.6' x 14.7'
Bedroom	2.7m x 4.5m	8.9' x 14.7'
Balcony	2.4m x 2.0m	8.0' x 6.5'

APARTMENT 3

INTERNAL AREA	69.0m ²	742.6ft ²
EXTERNAL AREA	9.1m ²	97.5ft ²
Living / Kitchen / Dining	5.7m x 4.0m	18.8' x 13.0'
Master Bedroom	2.7m x 5.2m	8.9' x 17.2'
Bedroom 2	2.8m x 3.5m	9.1' x 11.5'
Balcony	5.4m x 1.6m	17.6' x 5.4'

APARTMENT 4

INTERNAL AREA	67.1m ²	722.5ft ²
EXTERNAL AREA	7.9m ²	84.7ft ²
Living / Kitchen / Dining	5.6m x 6.9m	18.5' x 22.7'
Bedroom	3.3m x 3.9m	10.7' x 12.7'
Balcony	2.1m x 3.4m	6.9' x 11.2'

APARTMENT 5

INTERNAL AREA	53.4m ²	574.6ft ²
EXTERNAL AREA	5.0m ²	53.9ft ²
Living / Kitchen / Dining	5.7m x 4.5m	18.8' x 14.7'
Bedroom	2.7m x 4.6m	8.9' x 15.0'
Balcony	2.4m x 2.0m	8.0' x 6.5'

APARTMENT 6

INTERNAL AREA	53.3m ²	573.6ft ²
EXTERNAL AREA	5.4m ²	58.4ft ²
Living / Kitchen / Dining	5.7m x 4.5m	18.6' x 14.7'
Bedroom	2.7m x 4.6m	8.9' x 15.0'
Balcony	2.6m x 2.0m	8.5' x 6.5'

APARTMENT 7

INTERNAL AREA	70.0m ²	754.0ft ²
EXTERNAL AREA	8.8m ²	95.0ft ²
Living / Kitchen / Dining	6.6m x 3.9m	21.7' x 13.0'
Master Bedroom	2.8m x 5.2m	9.1' x 17.2'
Bedroom 2	3.3m x 3.5m	10.9' x 11.6'
Balcony	4.7m x 1.8m	15.4' x 5.8'

APARTMENT 8

INTERNAL AREA	73.2m ²	787.5ft ²
EXTERNAL AREA	6.4m ²	68.4ft ²
Living / Kitchen / Dining	6.5m x 6.2m	21.4' x 20.4'
Master Bedroom	3.6m x 3.4m	11.6' x 11.1'
Bedroom 2	3.3m x 4.1m	10.7' x 13.4'
Balcony	1.6m x 3.8m	5.2' x 12.5'



ORCHARD GARDENS TERRACE

H03A | Floor 03



- KEY**
- Orchard Gardens Terrace
 - Suite
 - One Bedroom
 - Two Bedroom
 - Three Bedroom
 - Residents' Room
 - Wheelchair Accessible Homes
 - ▲ Dimension Indicator
 - W Fitted Wardrobe
 - W/D Washer Dryer
 - HEC Heating & Electrical Controls
 - C Coat Cupboard
 - * Part-Affordable Housing
 - ** Affordable Housing

APARTMENT 1

INTERNAL AREA	53.1m ²	571.4ft ²
EXTERNAL AREA	5.6m ²	59.8ft ²
Living / Kitchen / Dining	5.7m x 4.5m	18.6' x 14.7'
Bedroom	2.7m x 4.5m	8.9' x 14.8'
Terrace	2.6m x 2.1m	8.4' x 6.9'

APARTMENT 2

INTERNAL AREA	53.2m ²	573.1ft ²
EXTERNAL AREA	5.1m ²	54.4ft ²
Living / Kitchen / Dining	5.7m x 4.5m	18.6' x 14.7'
Bedroom	2.7m x 4.5m	8.9' x 14.8'
Terrace	2.4m x 2.0m	8.0' x 6.5'

APARTMENT 3

INTERNAL AREA	69.1m ²	743.5ft ²
EXTERNAL AREA	9.1m ²	97.5ft ²
Living / Kitchen / Dining	5.7m x 4.0m	18.8' x 13.0'
Master Bedroom	2.7m x 5.2m	8.9' x 17.2'
Bedroom 2	2.8m x 3.5m	9.1' x 11.5'
Balcony	5.4m x 1.6m	17.6' x 5.4'

APARTMENT 4

INTERNAL AREA	67.1m ²	722.5ft ²
EXTERNAL AREA	7.9m ²	84.7ft ²
Living / Kitchen / Dining	5.6m x 6.9m	18.5' x 22.7'
Bedroom	3.3m x 3.9m	10.7' x 12.7'
Balcony	2.1m x 3.4m	6.9' x 11.2'

APARTMENT 5

INTERNAL AREA	53.4m ²	574.8ft ²
EXTERNAL AREA	5.0m ²	53.9ft ²
Living / Kitchen / Dining	5.7m x 4.5m	18.8' x 14.7'
Bedroom	2.7m x 4.6m	8.9' x 15.0'
Balcony	2.4m x 2.0m	8.0' x 6.5'

APARTMENT 6

INTERNAL AREA	53.3m ²	573.6ft ²
EXTERNAL AREA	5.5m ²	59.0ft ²
Living / Kitchen / Dining	5.7m x 4.5m	18.6' x 14.7'
Bedroom	2.7m x 4.6m	8.9' x 15.0'
Balcony	2.6m x 2.0m	8.5' x 6.5'

APARTMENT 7

INTERNAL AREA	70.1m ²	754.0ft ²
EXTERNAL AREA	8.8m ²	95.0ft ²
Living / Kitchen / Dining	6.6m x 3.9m	21.7' x 13.0'
Master Bedroom	2.8m x 5.2m	9.1' x 17.2'
Bedroom 2	3.3m x 3.5m	10.9' x 11.6'
Balcony	4.7m x 1.8m	15.4' x 5.7'

APARTMENT 8

INTERNAL AREA	73.2m ²	787.6ft ²
EXTERNAL AREA	5.9m ²	63.8ft ²
Living / Kitchen / Dining	6.5m x 6.2m	21.4' x 20.4'
Master Bedroom	3.6m x 3.4m	11.6' x 11.1'
Bedroom 2	3.3m x 4.1m	10.7' x 13.4'
Balcony	1.5m x 3.7m	5.0' x 12.2'



ORCHARD GARDENS TERRACE

H03A | Floor 04



- KEY**
- Orchard Gardens Terrace
 - Suite
 - One Bedroom
 - Two Bedroom
 - Three Bedroom
 - Residents' Room
 - Wheelchair Accessible Homes
 - ▲ Dimension Indicator
 - W Fitted Wardrobe
 - W/D Washer Dryer
 - HEC Heating & Electrical Controls
 - C Coat Cupboard
 - * Part-Affordable Housing
 - ** Affordable Housing

APARTMENT 1

INTERNAL AREA	53.2m ²	572.9ft ²
EXTERNAL AREA	5.6m ²	59.8ft ²
Living / Kitchen / Dining	5.7m x 4.5m	18.6' x 14.7'
Bedroom	2.7m x 4.5m	8.9' x 14.8'
Balcony	2.6m x 2.1m	8.4' x 6.9'

APARTMENT 2

INTERNAL AREA	53.2m ²	573.1ft ²
EXTERNAL AREA	5.2m ²	55.7ft ²
Living / Kitchen / Dining	5.7m x 4.5m	18.6' x 14.7'
Bedroom	2.7m x 4.5m	8.9' x 14.8'
Balcony	2.4m x 2.0m	8.0' x 6.5'

APARTMENT 3

INTERNAL AREA	69.1m ²	743.5ft ²
EXTERNAL AREA	9.1m ²	97.5ft ²
Living / Kitchen / Dining	5.7m x 4.1m	18.8' x 13.4'
Master Bedroom	2.7m x 5.2m	8.9' x 17.2'
Bedroom 2	2.8m x 3.5m	9.1' x 11.5'
Balcony	5.4m x 1.6m	17.6' x 5.4'

APARTMENT 4

INTERNAL AREA	66.1m ²	711.3ft ²
EXTERNAL AREA	7.8m ²	84.1ft ²
Living / Kitchen / Dining	5.6m x 6.9m	18.5' x 22.7'
Bedroom	3.3m x 3.9m	10.7' x 12.7'
Balcony	2.1m x 3.4m	6.9' x 11.2'

APARTMENT 5

INTERNAL AREA	53.4m ²	574.6ft ²
EXTERNAL AREA	5.0m ²	53.9ft ²
Living / Kitchen / Dining	5.7m x 4.5m	18.8' x 14.7'
Bedroom	2.7m x 4.6m	8.9' x 15.0'
Balcony	2.4m x 2.0m	8.0' x 6.5'

APARTMENT 6

INTERNAL AREA	53.2m ²	573.0ft ²
EXTERNAL AREA	5.4m ²	58.4ft ²
Living / Kitchen / Dining	5.7m x 4.5m	18.6' x 14.7'
Bedroom	2.7m x 4.6m	8.9' x 15.0'
Balcony	2.6m x 2.0m	8.5' x 6.5'

APARTMENT 7

INTERNAL AREA	70.1m ²	754.2ft ²
EXTERNAL AREA	8.8m ²	95.0ft ²
Living / Kitchen / Dining	6.6m x 3.9m	21.7' x 13.0'
Master Bedroom	2.8m x 5.2m	9.1' x 17.2'
Bedroom 2	3.3m x 3.5m	10.9' x 11.6'
Balcony	4.7m x 1.8m	15.4' x 5.8'

APARTMENT 8

INTERNAL AREA	55.5m ²	597.2ft ²
EXTERNAL AREA	26.0m ²	279.4ft ²
Living / Kitchen / Dining	8.7m x 5.4m	28.5' x 17.6'
Bedroom	3.5m x 4.2m	11.3' x 13.8'
Terrace	8.8m x 2.3m	28.7' x 7.7'



ORCHARD GARDENS TERRACE

H03A | Floor 05



KEY

- Orchard Gardens Terrace
- Suite
- One Bedroom
- Two Bedroom
- Three Bedroom
- Residents' Room
- Wheelchair Accessible Homes
- Coming Soon
- ▲ Dimension Indicator
- W Fitted Wardrobe
- W/D Washer Dryer
- HEC Heating & Electrical Controls
- C Coat Cupboard
- * Part-Affordable Housing
- ** Affordable Housing



APARTMENT 6		
INTERNAL AREA	55.5m ²	597.7ft ²
EXTERNAL AREA	27.5m ²	295.7ft ²
Living / Kitchen / Dining	8.7m x 5.3m	28.5' x 17.5'
Bedroom	3.5m x 4.1m	11.4' x 13.3'
Terrace	3.5m x 7.5m	11.6' x 24.6'



FIND OUT MORE

For more information about West Grove and **Elephant Park**, please contact **Lendlease**:

P 020 3675 9955

E welcomhome@lendlease.com

W www.elephantpark.co.uk

THE LIFE THE HEART THE ELEPHANT

The information in this document is indicative and is intended to act as a guide only as to the finished product. All images and animations used are for illustrative purposes only. Furniture and landscaping are also shown for illustrative purposes only. Detail design of facades and landscaping are subject to planning agreement and it is anticipated that there will be changes in landscape design. Individual features such as windows, brick and other materials' colours may vary, as may heating and electrical layouts. The information in this brochure should not be relied upon as accurately describing any of the specific matters under the Consumer Protection from Unfair Trading Regulations 2008 and the Business Protection from Unfair Trading Regulations 2008. This information including images, animations and dimensions is not intended to form part of or constitute a contract or warranty. All dimensions given on plans are approximate and subject to variations and should not be relied on particularly for carpet sizes, appliance sizes or items of furniture. The information provided in this document is as at February 2016 and is subject to change.

